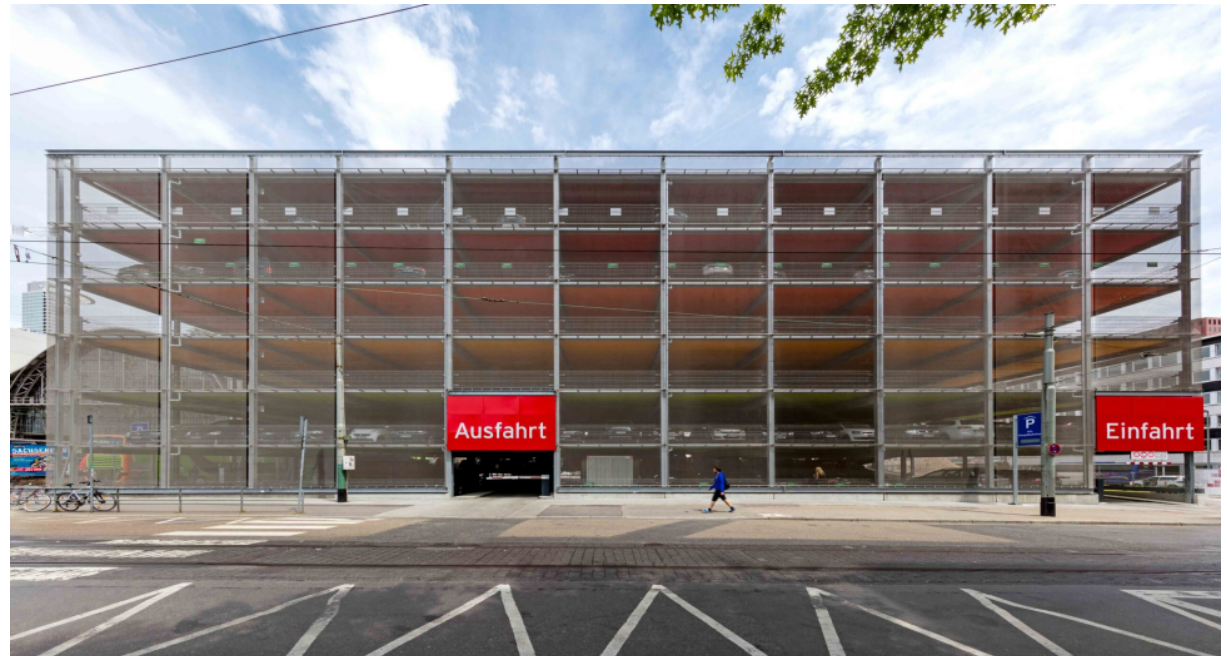


Temporary Parking Garage

Frankfurt am Main, 2015 Ongoing project
Transport infrastructure buildings

schneider+schumacher designed the façade for the temporary car park on the south side of Frankfurt's main station. The wire mesh, permeable to light and air, makes the interior pleasant and bright. The parking garage can accommodate 350 cars and 300 bicycles. It was built by CA Immo and is operated by the Parkhaus-Betriebsgesellschaft (PBG), a subsidiary of ABG FRANKFURT HOLDING.

As part of the light show Luminale 2016, [MESO Digital Interiors](#) developed a computer program that bathed the façade in a new light and turned it into a playground, where two players on bicycles rode in an imaginary race through the city.



Temporary Parking Garage

Frankfurt am Main, 2015 Ongoing project
Transport infrastructure buildings

Technical details:

Typology: Transport infrastructure buildings

Procurement documentation: Direct

