

## Rheinpfalz Police Headquarters

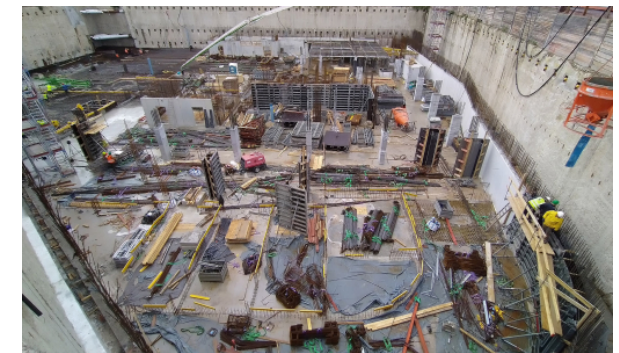
Ludwigshafen, 2024 Ongoing project  
Office/administration buildings

The building complex brings together the various police stations in a central, community-oriented location, enabling the approximately 650 staff members to work together under one roof in future. wulf architekten are responsible for the design and detailed planning, whilst schneider+schumacher is handling the tendering, contract award and construction supervision for the project, which is scheduled for completion in 2027.

The design by wulf architekten envisages a two-part new building - the taller structure, standing 44 metres high, comprises twelve storeys, with a further tower of eight storeys, standing 29 metres high, arranged in a staggered formation. Open spaces will be developed around the building to create a link to public life in the city.

Sustainability is a key priority for the new police headquarters. Recycled concrete will be used in the construction, and the flat roofs will be greened. There is also a particular focus on e-mobility. With 20 charging points and one fast-charging station for cars, plus ten more for e-bikes, long-term developments have already

...



## Rheinpfalz Police Headquarters

Ludwigshafen, 2024 Ongoing project  
Office/administration buildings

been taken into account.

Technical details: