

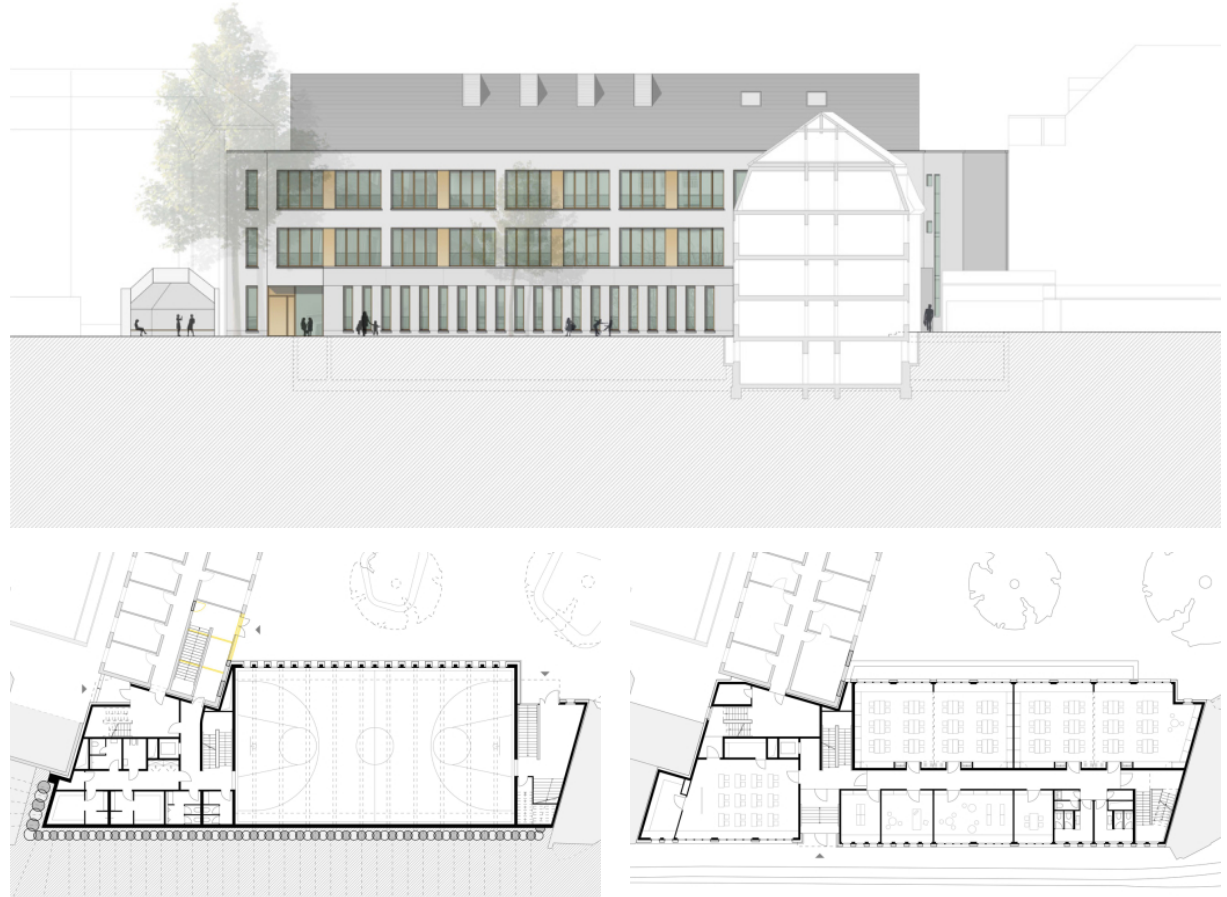
## primary school Weissliliengasse

Mainz, 2012  
??/??/??

Â The new primary school occupies a previously vacant site in the centre of Mainz's old town. It is built for a two-class intake and includes a single-field sports hall.

The brief called for a school building to house some 200 students, a 400 m<sup>2</sup> sports facility, and 8 classrooms - each of 60m<sup>2</sup> - for use as family classrooms, plus ancillary rooms. The programme also included areas for the administration, a staff-room, space for parents' meetings, a library and a multi-purpose room, plus specialised classrooms for use by the neighbouring secondary school.

The primary school classrooms are north facing and overlook the quiet courtyard, with large windows providing plenty of light. By exploiting the slope of the site, the sports hall, located at basement level, is naturally lit from the courtyard side. The plan is to connect the new building with an existing church administration building.



# primary school Weissliliengasse

Mainz, 2012  
SS/SSSS

SSSS:

SS/SSS: diocese Mainz

Tragwerksplanung: TSB Ingenieurgesellschaft mbH

SSSSSS: RCI GmbH

SSSS: Adler & Olesch

SSS: 3.200 m<sup>2</sup>

