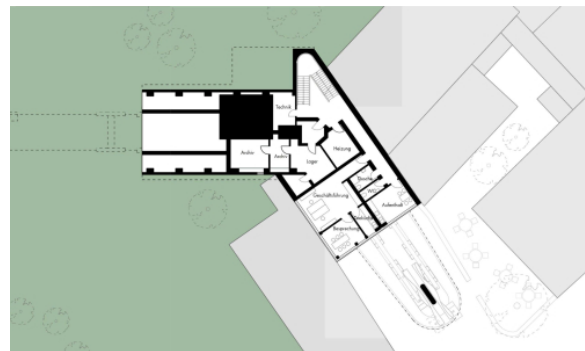


Lower Cable Car Terminal Rüdesheim

Rüdesheim, 2012 Ongoing project
Transport infrastructure buildings

In a competition to build a new lower cable car terminal at the Germania monument in Rüdesheim am Rhein, schneider+schumacher have been awarded first prize. Working within a strict budget and tight spatial constraints, the challenge of this project lay in providing a new access to the cable car, which is currently situated two floors above ground level. The design solution is based on the idea of bringing the cable car to the people, rather than people to the cable car. Providing direct access to the cabins has several advantages: shortened distances, the potential for storage at ground level, and instant visibility for the cable railway. Simultaneously it offers the opportunity to add a new striking and emblematic built component to the cable car terminal. This lends the Rüdesheim cable car an unmistakable visual character and as a result, the 'Rüdesheim Wheel' has a strong symbolic presence in the town.



Lower Cable Car Terminal Rüdesheim

Rüdesheim, 2012 Ongoing project
Transport infrastructure buildings

Technical details:

Client: Rüdesheimer Seilbahngesellschaft mbH, Bayer
Opitz & Co. KG

Typology: Transport infrastructure buildings

Baumanagement: schneider+schumacher Bau- und
Projektmanagement GmbH

Procurement documentation: Competition