

primary school Weissliliengasse

Mainz, 2012

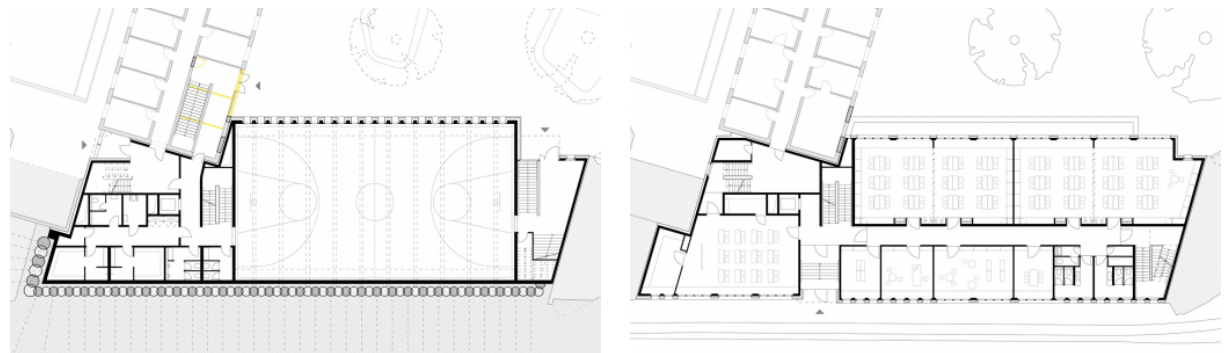
Schools/educational facilities

Â The new primary school occupies a previously vacant site in the centre of Mainz's old town. It is built for a two-class intake and includes a single-field sports hall.

The brief called for a school building to house some 200 students, a 400 m² sports facility, and 8 classrooms - each of 60m² - for use as family classrooms, plus ancillary rooms. The programme also included areas for the administration, a staff-room, space for parents' meetings, a library and a multi-purpose room, plus specialised classrooms for use by the neighbouring secondary school.

The primary school classrooms are north facing and overlook the quiet courtyard, with large windows providing plenty of light. By exploiting the slope of the site, the sports hall, located at basement level, is naturally lit from the courtyard side. The plan is to connect the new building with an existing church administration building.

Â



primary school Weissliliengasse

Mainz, 2012

Schools/educational facilities

Technical details:

Client: diocese Mainz

Tragwerksplanung: TSB Ingenieurgesellschaft mbH

Building Services: RCI GmbH

Grounds: Adler & Olesch

Gross floor area: 3.200 m²

