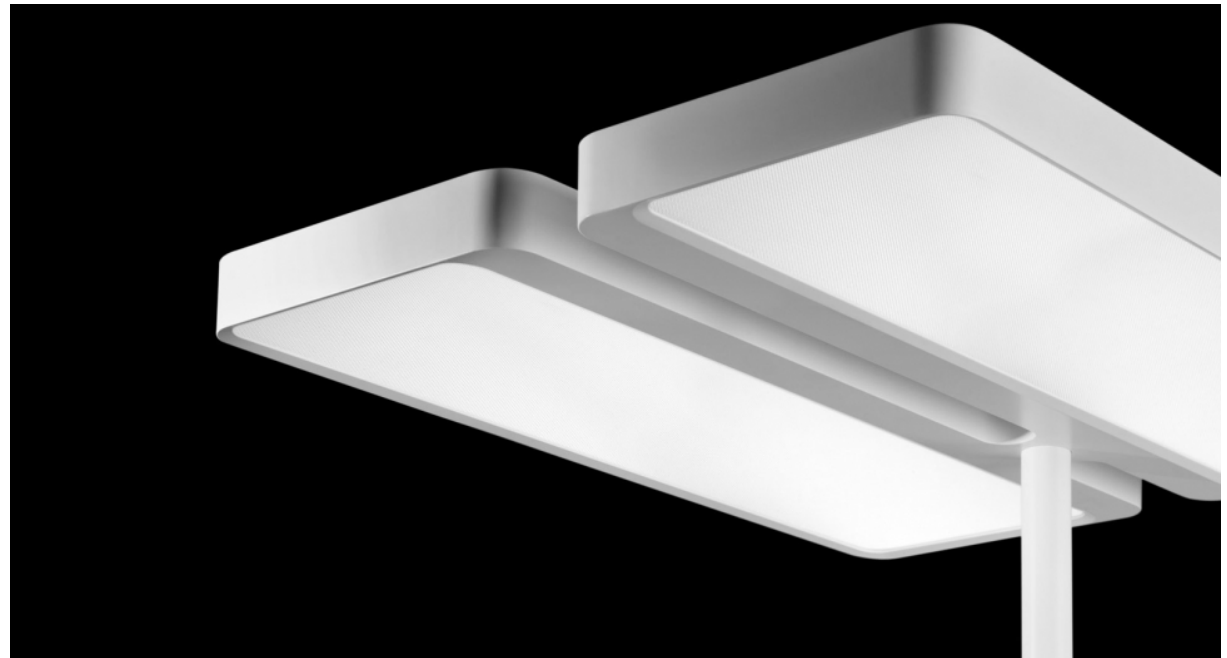


Office Lighting TWEAK

Design/Object

TWEAK belongs to a new generation of freestanding uplighters designed for tomorrow's office environment. Equipped with an electronic interface, the intuitive operating concept allows the lamp to be individually adjusted as necessary. The luminaire head and stand are each made of a single powder coated die-cast aluminium element. Due to its timeless design, TWEAK can be used anywhere. TWEAK lighting products offer individual solutions with two different light sources (CLD and LED) and three different operating systems.



Office Lighting TWEAK

Design/Object

Technical details:

Client: Regent Beleuchtungskörper AG

Typology: Design/Object