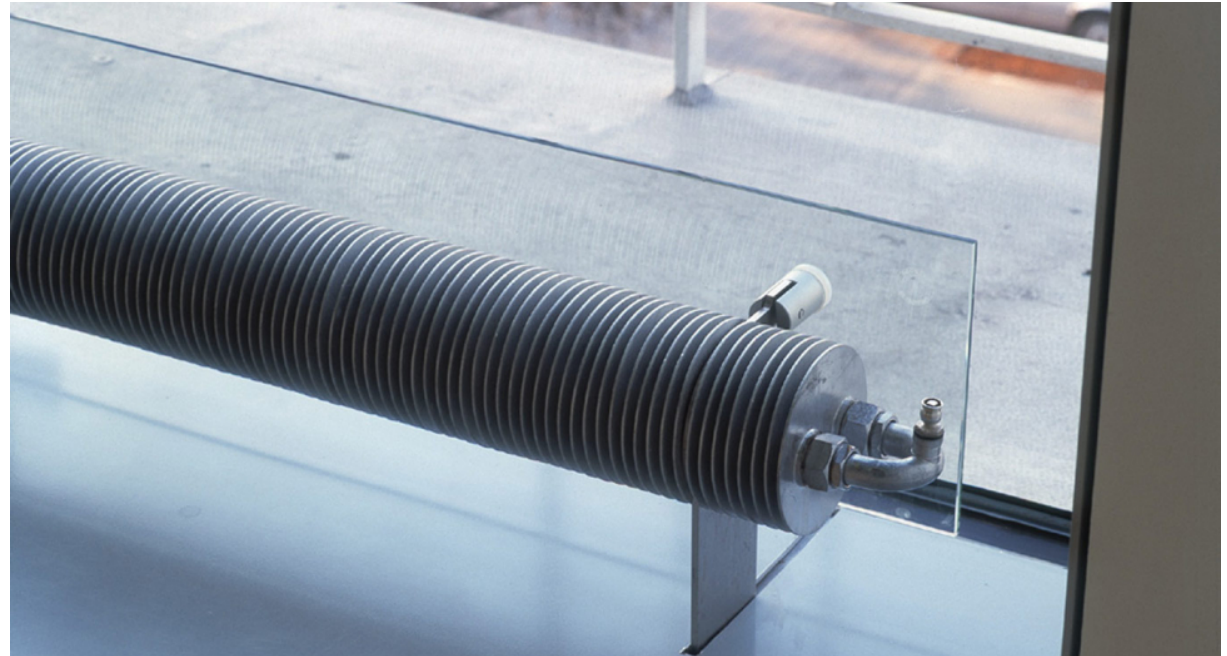


## LOFT radiator

1997  
Design/Object

This is a precise geometric shape, reduced to its essentials. The heating ribs are threaded onto a pipe. The tube is then inflated with the water pressure, causing the ribs to attach themselves to the whole, and ensuring optimum heat transfer.



# LOFT radiator

1997  
Design/Object

Technical details:

Typology: Design/Object