

## House of Philanthropy

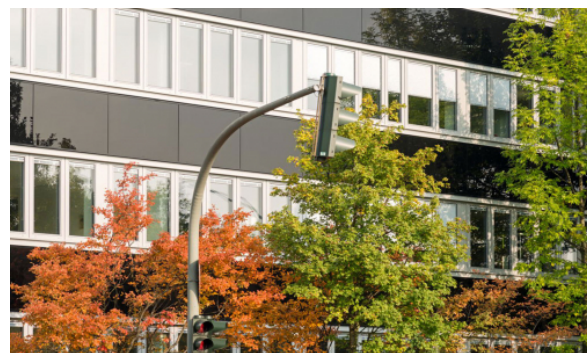
Hamburg, 2012 - 2013  
Office/administration buildings

The building occupied by Stiftung Hilfe mit Plan, dates from the 1970s. It was extended upwards in the 1980s and a second extension to the building was added in the 1990s. It is located at the corner of Bramfelder Strasse and Krausestrasse, a busy crossroads in Hamburg's Barmbek district.

In the course of the refurbishment work, some of the office space was transformed into a conference rooms and a cafeteria, and office space was reorganised throughout the entire building. On the exterior the façade was refurbished to make it more energy efficient and two new canopy roofs were erected.

The new design concept for the entire building takes as its starting point the countries in which Plan operates: each with their specific, intense colours. The foyer embraces the idea of "one world" with its earthy colours (blue, green, beige and brown). Here soft shapes create a playful, friendly atmosphere, reflecting the idea of the "whole world", and making visitors feel welcome.

Conjointly with GTL, Kassel.



# House of Philanthropy

Hamburg, 2012 - 2013  
Office/administration buildings

## Technical details:

Client: Stiftung Hilfe mit Plan (Plan International  
Deutschland e.V.)

Typology: Office/administration buildings

Gross floor area: 4,094 m<sup>2</sup> above ground

Baumanagement: schneider+schumacher Bau- und  
Projektmanagement GmbH

Procurement documentation: Direct

Service phases (HOAI): 1-8

