

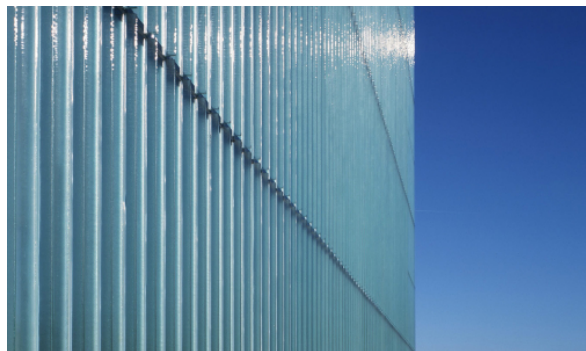
ERCO Industrial Glazing Facade

Lüdenscheid, 2001
SSSS

The industrial glass facade ERCO has the advantage of reducing the visibility of the supporting structure to a minimum and maximizes the effect of light and the light incidence.

The frameless glass panels are held from behind by by Structural-Sealant-Glazing-Bonding.

The translucent glass industrial design reveals the inner workings of their buildings.



ERCO Industrial Glazing Facade

Lüdenscheid, 2001
SSSS

SSSS:

SSSS: SSSS
SSSSSS: 1-5