

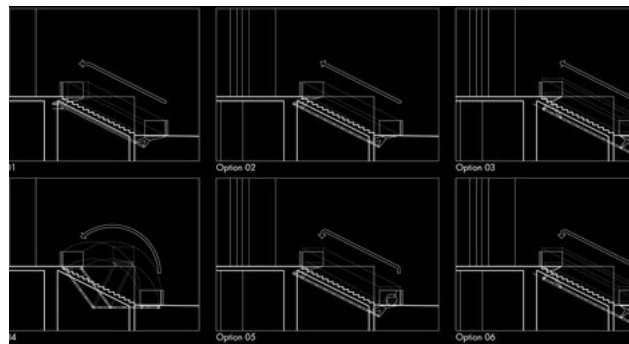
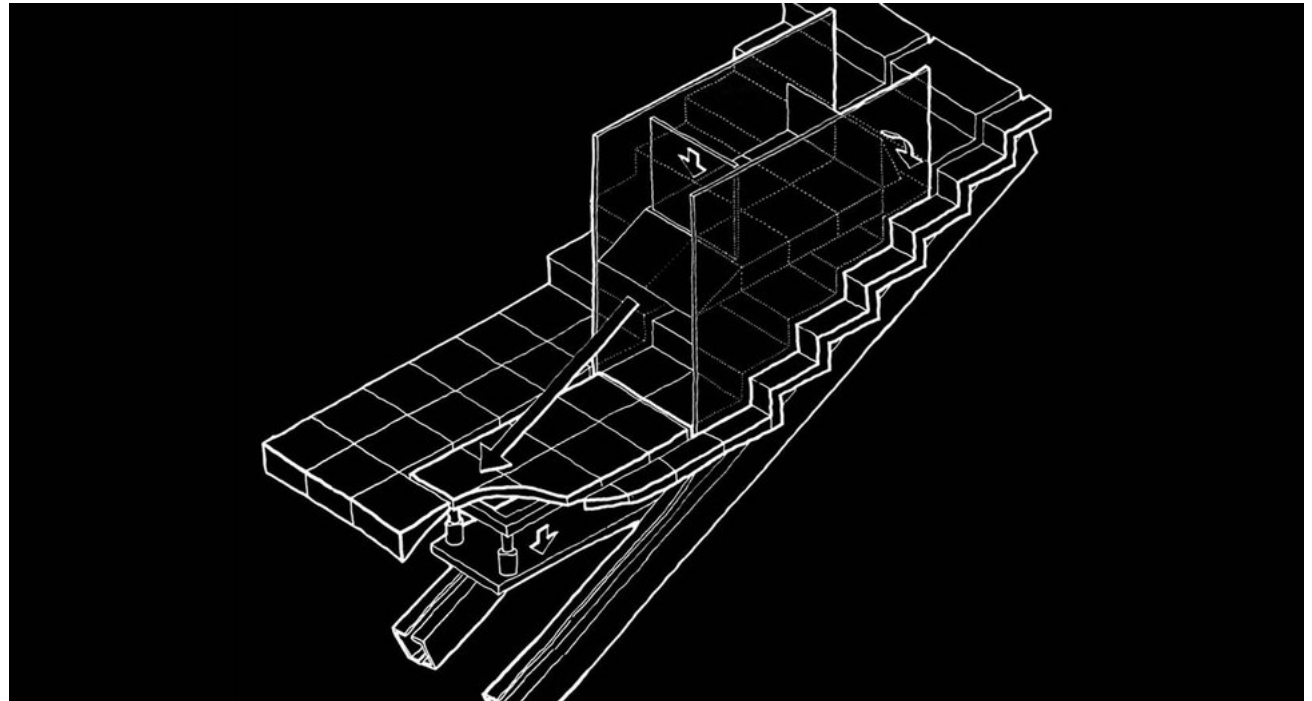
MOVER Stair lift

Frankfurt am Main, 2008

Transport infrastructure buildings

schneider+schumacher Kinetik is developing a moving platform for wheelchair users for their Städel Museum project, a special stair lift named mover. This stair lift will give wheelchair users unrestricted access to the museum from the steps of the historic main entrance, allowing them to use the same entrance as all other visitors.

The only visible element of the mover is an elegant platform made of steel and glass which moves smoothly above the steps. The elaborate lifting mechanism, patented by schneider+schumacher Kinetik, is completely invisible to the beholder, since it is fully integrated into the existing building fabric.



MOVER Stair lift

Frankfurt am Main, 2008

Transport infrastructure buildings

Technical details:

Typology: Transport infrastructure buildings

Project architect: Michael Schumacher