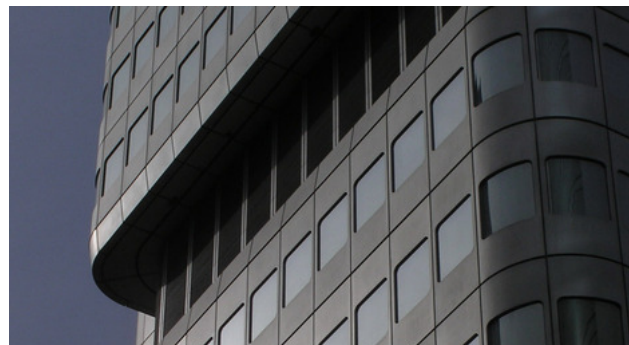


## Renovation Silvertower

Frankfurt am Main, 2008 – 2011

Office/administration buildings

By the time the Silvertower – then the highest building in Germany – first went into operation in 1980 (Architects: Apel + Beckert + Becker), it had already caused quite a stir: the smart, meticulously planned aluminium façade with convex metal cladding and partially curved glazed elements still conveys a coherent picture of that period. Here, in one building, economic prosperity and the art of craftsmanship are fused together. This fact was ubiquitously evident during the judicious renovation work (now completed) we carried out on the building. Internally, to comply with fire regulations, structural alterations were carried out. In addition, office floors were reorganised and technical equipment was renewed. On the interior, schneider+schumacher have created visual accents with new specially designed elements – for instance the light fittings and reception desk in the foyer.



# Renovation Silvertower

Frankfurt am Main, 2008 – 2011

Office/administration buildings

## Technical details:

Client: Commerzbank AG

Typology: Office/administration buildings

Gross floor area: 77,509 m<sup>2</sup>

Project architect: Till Schneider, Ralf Seeburger, Tim Ahlswede

Project manager: Wiebke Rösler, Matthias Hohl

Construction management: schneider+schumacher Bau- und Projektmanagement GmbH

Procurement documentation: Direct

General planing: schneider+schumacher Bau- und Projektmanagement GmbH

Service phases (HOAI): General contractor 1-9

Lead construction manager: Wolfgang Herold, Mato Sokcevic

